

# 5FG/5FD

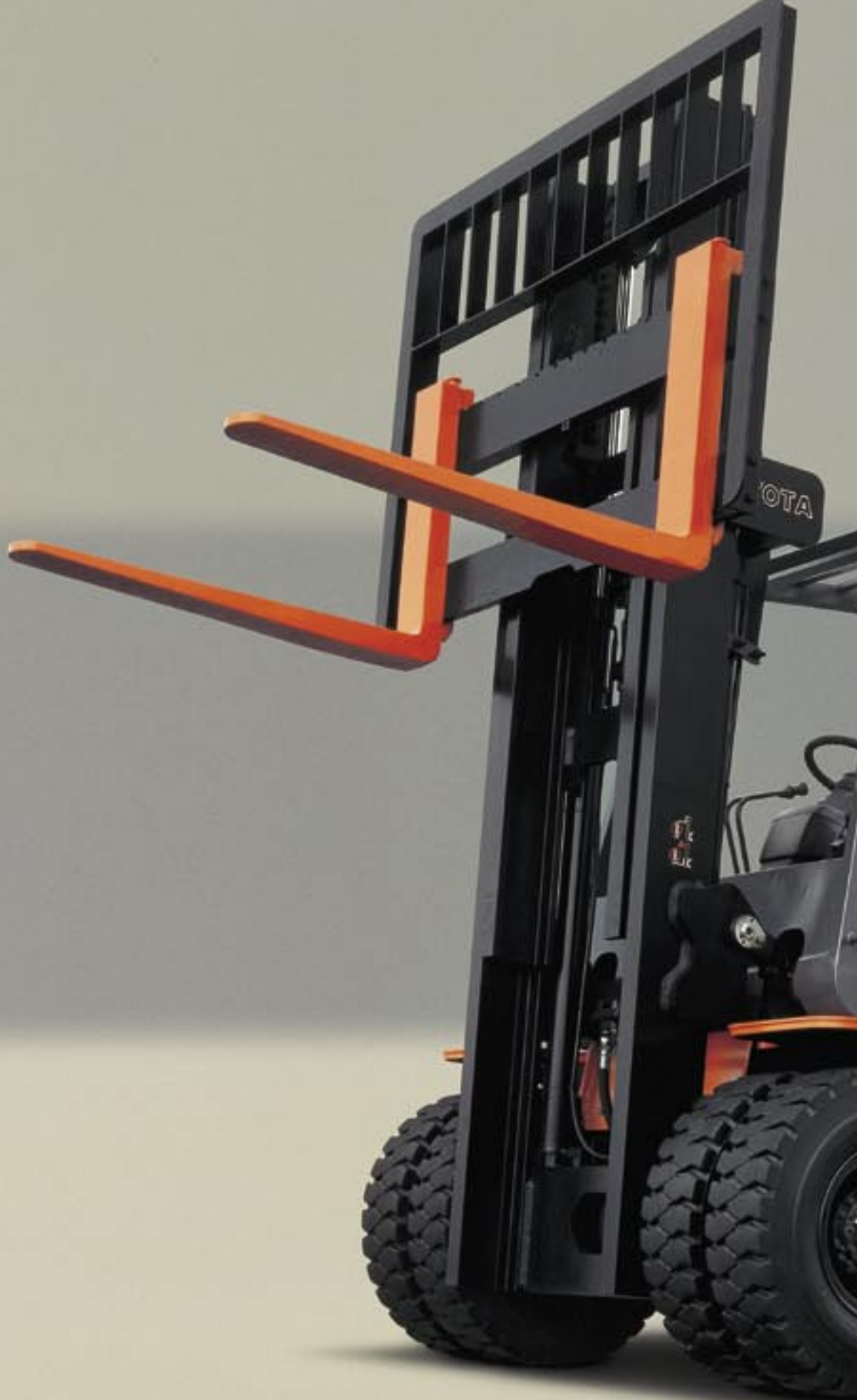
ENGINE POWERED FORKLIFT

5.0 to 8.0 ton

S E R I E S



 TOYOTA



# Toyota's Commitment of Conti

More Power, More Comfort and Harmonized with Field-proven Reliability



Toyota's engine-powered pneumatic tire 5-8 ton series has won high acclaim from the market for its incomparable toughness, stability and performance.

This series features a safe-and-solid design and stability that inspires job confidence. And a wide range of model sizes allows you to choose the best forklift for the job at hand. In its pursuit of even higher levels of customer satisfaction, Toyota is now introducing new engines and advanced technologies to provide this series with even better environmental friendliness, comfort and steady performance. Offering efficiency and plenty of comfort, these forklifts point the way to the future while being the ideal trucks for getting the job done at your worksite today.

# nuous Improvement

# Progress Without Co

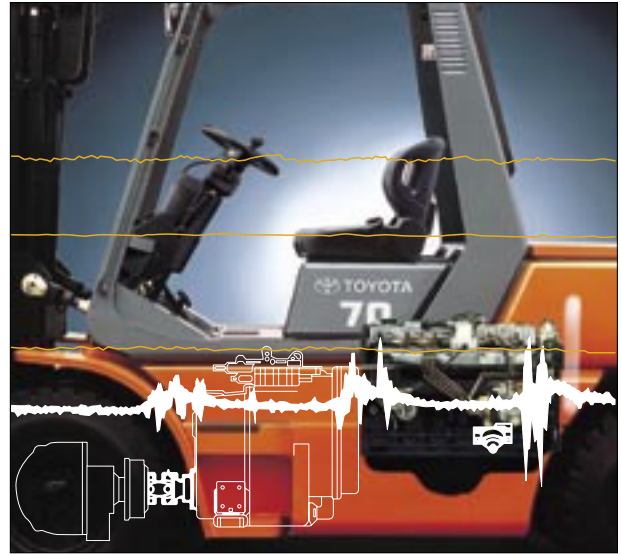
Toyota thinks of the operator first and foremost. This concern for the forklift operator shows in the Toyota design. Offering a stable and solid construction inspires confidence and reliability...and a good deal of comfort besides. Toyota's state-of-the-art technology has endowed the 5-8 ton series with the newly developed engine. This rugged powerhouse delivers dramatically high efficiency together with outstanding fuel economy, and features minimized vibration and noise for a more comfortable ride — another achievement of Toyota's drive to blend the latest technical advances with enduring comfort for the operator.



# Comfort? Not at Toyota



## A Full-Floating System for Uncompromising Comfort



This series uses a full-floating system that vastly reduces the amount of engine vibration transmitted to the frame, providing a ride of unmatched comfort. This promises not only more comfort for the operator, but greater frame durability as well. Rest assured that Toyota will never make technological advancements at the expense of operator comfort. Toyota's "operator first" tradition shows in this series

# Toyota Quality: Always a Step Ahead

## PERFORMANCE



### Powershift Transmission

The advanced powershift transmission provides smooth yet powerful acceleration response. It features a single speed in both forward and reverse, and the finger-tip control shift lever boosts handling efficiency while reducing operator fatigue.



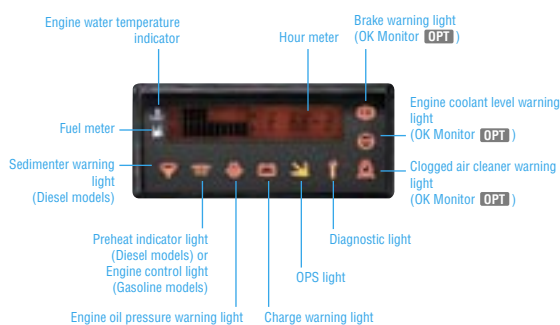
### Engine

Powerful and reliable 14Z-II engine is mounted on diesel models. This 5.2 liter engine provides high torque in the low rpm range.

The gasoline models use 1FZ-E engine that features an electronic control system. This system regulates the fuel injection and ignition systems to achieve the optimal fuel-air ratio and provides high power, low fuel consumption and clean exhaust emissions all at the same time.

## CONVENIENT & FUNCTIONAL EQUIPMENT

### Combination Meter



Necessary instrumentation, such as the fuel meter, water temperature indicator and hour meter are shown in an easy-to-monitor digital format.

### Multifunction Display OPT

The Multifunction Display offers useful information for operations, including speedometer, trip meter, torque-converter oil temperature indicator and various warnings. It also has the over speed alarm setting and the scheduled-maintenance hour setting functions. And there are also password-protected functions for use by supervisors or managers.



• Digital speedometer



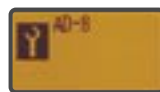
• Torque converter oil temperature warning



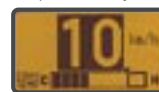
• Odometer and trip meter



• Scheduled-maintenance hour warning indicator



• Diagnostic code display



• Over speed alarm



• Over speed alarm setting

- Torque-converter oil temperature indicator
- Scheduled-maintenance hour meter
- Scheduled-maintenance hour setting
- Parking brake warning
- Menu-lock setting



## SAFETY & MANEUVERABILITY

### Operator Presence Sensing System **OPS**

The Operator Presence Sensing system (OPS) is standard equipment. This system uses a switch sensor built into the operator's seat to detect the presence of the operator. If the operator is not in the normal operating position, travel power is interrupted and load handling operations are stopped.

### Seat

This side-wing and seat-belt equipped Operator Restraint System (ORS) seat wraps the operator in both safety and comfort. It offers 150mm adjustment longitudinally. The Suspension Seat with Damper is optionally available.

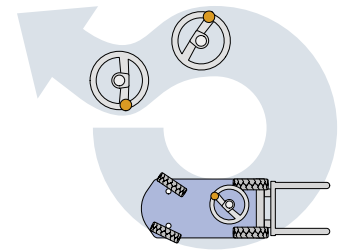


### Steering

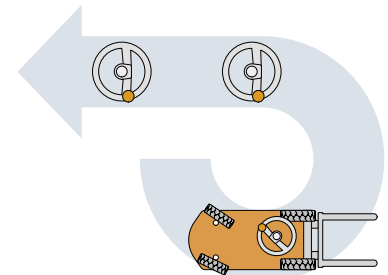
The small-diameter steering wheel and hydrostatic steering system provide excellent maneuverability. The steering column can also be tilted steplessly along a 68 mm range for optimum comfort.

### Active Steering Synchronizer **OPT**

This function ensures that the position of the steering wheel unvaryingly corresponds with the position of the rear steer wheels.



Without Active Steering Synchronizer



With Active Steering Synchronizer

## SERVICEABILITY

### Engine Hood

The engine hood is completely sealed for maximum comfort, and opens fully to a wide 85°. A hood damper reduces the effort needed to open the hood.

### Radiator Cover

A sealed design is used for the radiator cover as well, and easy access is assured by the handy damper, which makes opening and closing the cover a snap.



# MODEL VARIATION



## MAIN SPECIFICATIONS

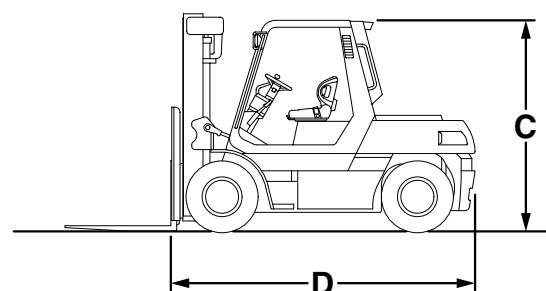
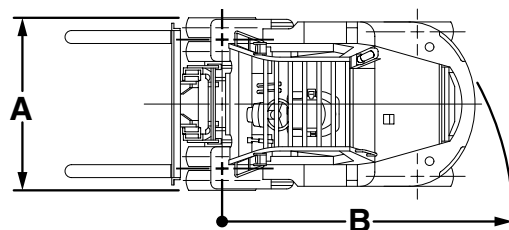
Model		5FG/5FD50	5FG/5FD60	5FG/5FD70	60-5FD80
Engine Model		1FZ-E, 14Z-II	1FZ-E, 14Z-II	1FZ-E, 14Z-II	14Z-II
Load Capacity	kg	5000	6000	7000	8000
Load Center	mm	600	600	600	600
Overall Width	A mm	1995	1995	1995	2160
Turning Radius (Outside)	B mm	3350	3350	3400	3700
Overhead Guard Height	C mm	2440	2440	2440	2615
Length to Fork Face	D mm	3460	3505	3585	3930

## ENGINE SPECIFICATIONS

Model		TOYOTA 1FZ-E Gasoline
Piston Displacement	cc	4476
Rated Horsepower/r.p.m.	kW	63/2350
	JIS ps	86/2350
Rated Torque/r.p.m.	N-m	294/1200
	JIS kg-m	30/1200

Model		TOYOTA 14Z-II Diesel
Piston Displacement	cc	5204
Rated Horsepower/r.p.m.	kW	72/2400
	JIS ps	98/2400
Rated Torque/r.p.m.	N-m	340/1400
	JIS kg-m	34.7/1400



The data in this brochure is determined based on our standard testing condition.  
 The performance may vary depending on the actual specification and condition of the vehicle as well as the condition of the operating area.  
 Availability and specifications depend on region and are subject to change without notice.  
 Due to photography and printing, color of actual vehicle may vary from this brochure. Some photos have been computer-enhanced.  
 Please consult your Toyota representative for details.

Printed on recycled paper.  
 All rights reserved by Toyota Industries Corporation.



**TOYOTA Material Handling Company**  
 A Division of TOYOTA INDUSTRIES CORPORATION