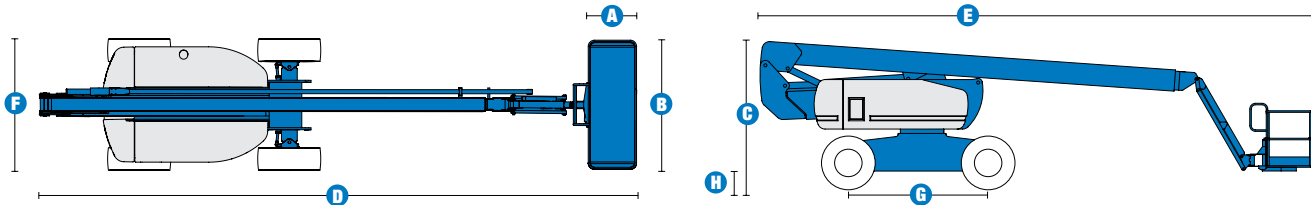


Specifications



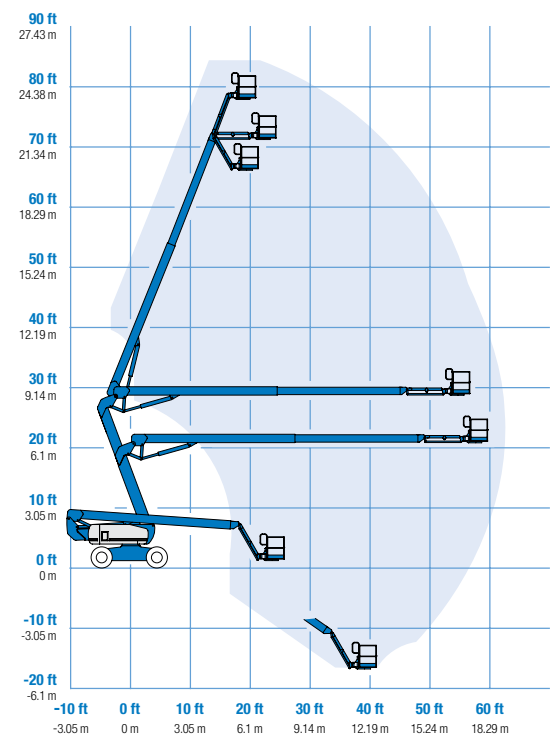
| MODEL | Z™-80/60 | |
|------------------------------------|----------|-------------|
| MEASUREMENTS | Metric | US |
| Working height maximum* | 25.77 m | 84 ft |
| Platform height maximum | 23.77 m | 78 ft |
| Horizontal reach maximum | 18.29 m | 60 ft |
| Up and over clearance maximum | 8.83 m | 29 ft |
| Below ground reach | 4.83 m | 15 ft 10 in |
| A Platform length | 0.91 m | 3 ft |
| B Platform width | 2.44 m | 8 ft |
| C Height - stowed | 3.00 m | 9 ft 10 in |
| D Length - stowed | 11.27 m | 37 ft |
| E Length - transport | 11.27 m | 37 ft |
| F Width | 2.49 m | 8 ft 2 in |
| G Wheelbase | 2.85 m | 9 ft 4 in |
| H Ground clearance - centre | 0.30 m | 12 in |

| PRODUCTIVITY | | |
|----------------------------------|---------------------|------------|
| Lift capacity | 227 kg | 500 lbs |
| Platform rotation | 160° | 160° |
| Vertical jib rotation | 135° | 135° |
| Turntable rotation | 360° continuous | |
| Turntable tailswing - riser up | 1.17 m | 3 ft 10 in |
| Turntable tailswing - riser down | 2.24 m | 7 ft 4 in |
| Drive speed - stowed | 4.83 km/h | 3.0 mph |
| Drive speed - raised** | 1.1 km/h | 0.68 mph |
| Lift speed to full height | 76 sec | 76 sec |
| Gradeability - 4WD - stowed*** | 45% | 45% |
| Turning radius - 4WS inside | 2.13 m | 7 ft |
| Turning radius - 4WS outside | 4.57 m | 15 ft |
| Controls | 12V DC proportional | |
| Tyres - RT Lug - Foam filled | 445 / 500 710 | |

| POWER | | |
|--------------------------------------|--|--------|
| Power source | Deutz TD 2011 L04i 4 cylinder diesel 58 kW (78 hp) | |
| Auxiliary power unit | 12V DC | 12V DC |
| Hydraulic tank capacity | 170 L | 45 gal |
| Fuel tank capacity – diesel machines | 132 L | 35 gal |

| WEIGHT**** | | |
|------------|-----------|------------|
| | 17,010 kg | 37,500 lbs |

RANGE OF MOTION Z™-80/60



STANDARDS COMPLIANCE ANSI A92.5, CSA B354.4, CE Compliance, AS 1418.10

* The metric equivalent of working height adds 2 m to platform height. U.S. adds 6 ft to platform height.
 ** In lift mode (platform raised), the machine is designed to operate on firm, level surfaces only.
 *** Gradeability applies to driving on slopes. See operator's manual for details regarding slope ratings.
 **** Weight will vary depending on options and/or country standards.

Features

STANDARD FEATURES

MEASUREMENTS

- 25.77 m (84 ft) working height
- 18.28 m (60 ft) horizontal reach
- 8.83 m (29 ft) up and over clearance
- Up to 227 kg (500 lbs) lift capacity

PRODUCTIVITY

- 2.44 m (8 ft) steel platform
- 4WD
- 4WS
- Full-time active oscillating axle
- Rough terrain foam-filled
- 1.83 m (6 ft) jib with 135° range
- Self-leveling platform
- Hydraulic platform rotation
- Fully proportional Hall effect controls
- On-board diagnostics
- ALC 1000 electronic control system
- Hydraulic oil cooler
- Drive enable
- Horn
- Hour meter
- Tilt alarm
- 360° continuous turntable rotation
- Locking turntable covers
- Full-time positive traction drive
- Two speed wheel motors
- Four steering modes: front, rear, crab and coordinated
- Configurable controls to limit lift height to 21.34 m (70 ft)
- Thumb rocker steer
- Alarm package
- Dual flashing beacons

POWER

- 12 V DC auxiliary power
- Deutz diesel 58 kW (78 hp)
- Anti-restart engine protection
- Auto engine fault shutdown
- Engine monitoring display
- Dual battery
- Engine status display

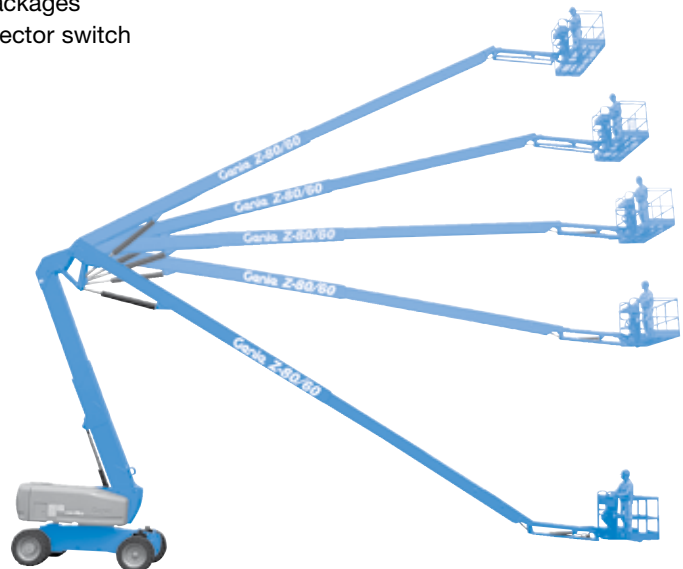
OPTIONS & ACCESSORIES

PRODUCTIVITY

- Platform swing gate
- Half-mesh platform inserts with swing gate
- Platform top auxiliary rail
- Air line to platform
- Fire resistant hydraulic oil
- Biodegradable hydraulic oil
- Basic hostile environment kit
- Deluxe hostile environment kit
- Deluxe aircraft protection package (6 ft platform only)
- Tool tray
- Fluorescent tube caddy
- Platform work lights
- Front driving lights
- Lockable platform control box covers
- 1.83 m (6 ft) steel platform
- High flotation rough terrain tyres
- Rough terrain non-marking foam-filled tyres

POWER OPTIONS

- 240 V power to platform
- 7 kVA hydraulic generator (240 V/50 Hz)
- Cold Weather Packages
- Retained key selector switch



Genie Australia – Toll free number 1800 788 633

Brisbane (Head Office)
33 Kimberley Street
Darra QLD 4076

Sydney
74 Glendenning Road
Glendenning NSW 2761

Melbourne
374 Hammond Road
Dandenong VIC 3175

Perth
126 Sheffield Road
Welshpool WA 6106

Genie United States

Distributed by:

18340 NE 76th Street
P.O. Box 97030
Redmond, Washington
98073-9730

Effective Date: April 2012. Product specifications and prices are subject to change without notice or obligation. The photographs and/or drawings in this document are for illustrative purposes only. Refer to the appropriate Operators' Manual for instructions on the proper use of this equipment. Failure to follow the Operators Manual when using our equipment or to otherwise act irresponsibly may result in serious injury or death. The only warranty applicable to our equipment is the standard written warranty applicable to the particular product and sale and we make no other warranty, express or implied. Products and services listed may be trademarks, service marks, or trade names of Terex Corporation, Terex South Dakota, Inc., and/or their subsidiaries in the USA and other countries. All rights reserved. Terex is a registered trademark of Terex Corporation in the USA and many other countries. Genie is a registered trademark of Terex South Dakota, Inc. in the USA and many other countries. ©2009 Terex Corporation.