

monitor LIFTS



This spider's light weight and compact stowed size allows easy transportation. This package, including the trailer, weighs approx. 2t.



The light-weight basket is simple to remove in less than one minute, allowing very narrow access and reducing the stowed length to only 3.69m



The 1365 and 1380 spiders are simple, strong machines, ideally suited to commercial contractors such as painters, electricians and shed builders.



The large fly-jib is designed for maximum travel and flexibility.



The 1365 and 1380 can be driven from the basket or the ground via a remote control.

SPECIFICATIONS

1365

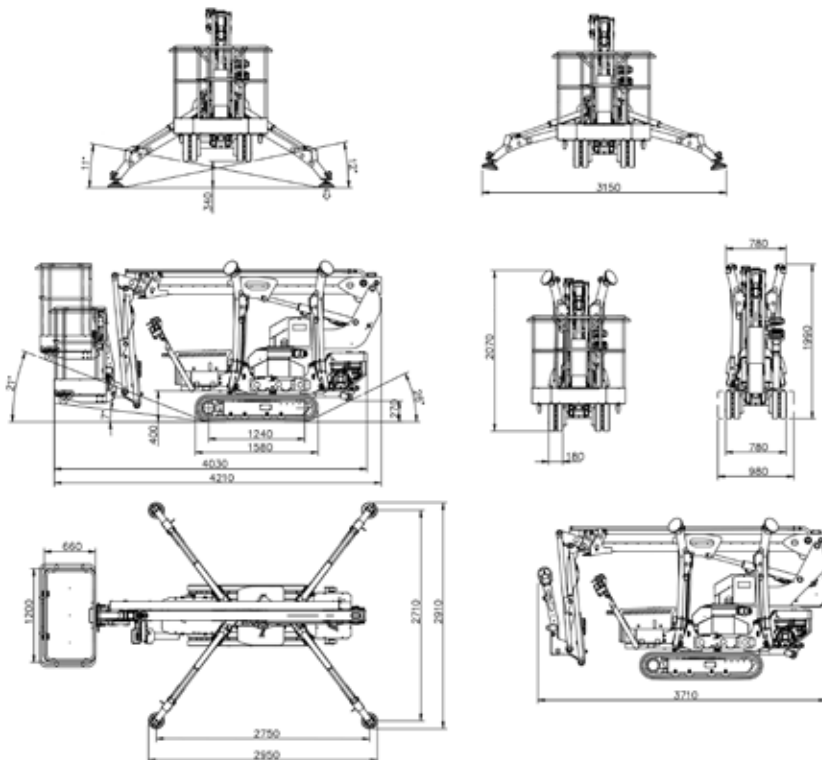
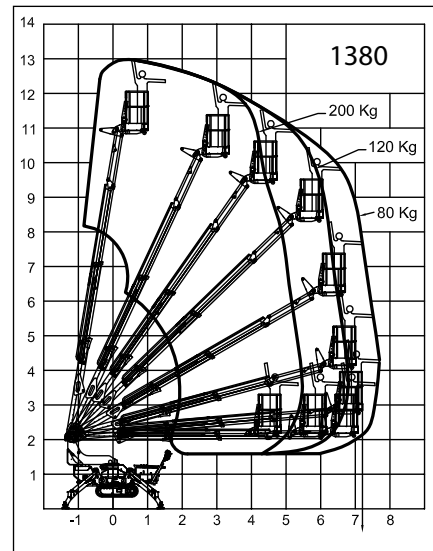
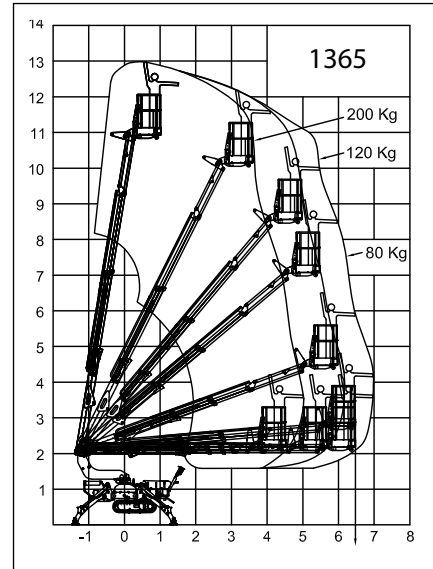
1380

| | | |
|---|---|---|
| Max Working Height (m) | 12.99 | 12.99 |
| Max Platform Height (m) | 10.99 | 10.99 |
| Max Horizontal Working Outreach (m) | 7.00 | 7.70 |
| Max Horizontal Outreach to edge of basket (m) | 6.50 | 7.20 |
| Lift Capacity / SWL (kg) | 200 | 200 |
| Weight / Outreach Limited (Yes/No) | Yes | Yes |
| Turret Rotation | 360 | 360 |
| Basket Rotation | No | No |
| Length with basket (m) | 4.21 | 4.21 |
| Length w/out basket (m) | 3.71 | 3.71 |
| Width stowed tracks (m) narrow/wide | 0.78/0.98 | 0.78/0.98 |
| Height (m) stowed | 1.99 | 1.99 |
| Basket Dimensions | 1.2 x .66 | 1.2 x .66 |
| Total Weight (kg) with long tracks | 1590 (fixed) 1730 (exp) | 1620 (fixed) 1760 (exp) |
| Max ground pressure driving (approx) | 37.8 kN/m ² | 37.8 kN/m ² |
| Max stabilizer force | 10.9 kN | 11.81 kN |
| Max stabilizer pressure with std foot pad | 318 kNm ² | 375 kNm ² |
| Gradeability length-wise | 27% / 15 degrees | 27% / 15 degrees |
| Gradeability sideways | 21% / 12 degrees | 21% / 12 degrees |
| Stabilizer set-up dimensions | 2.91 x 2.95 o/o | 2.91 x 2.95 o/o |
| Narrow set-up dimensions | N/A | N/A |
| Max slope for stabilizers | 12 degrees | 12 degrees |
| Standard Power Source/s | Honda 13 Hp Petrol & 240 Volt electric system | Honda 13 Hp Petrol & 240 Volt electric system |
| Optional Power Sources | Yanmar 9 hp Diesel | Honda & Battery * |
| Drive system | Tracks (long) | Tracks (Long) |
| Expanding tracks | Option | Std |
| Drive speed km/h | 2.4 | 2.4 |
| 2 Speed Drive | Yes | Yes |
| Remote drive control | Wired remote | Wired remote |
| Battery voltage | 12 | 12 |
| Basket load control | Std | Std |
| Electric & Air outlets in basket | Std | Std |
| Electric emergency lowering | Option | Option |

Complies with AS1418.10

*Honda & Battery adds 40kg to weight.

(E & OE.)



The incredibly compact dimensions of the 1380 allows it to fit inside a lift in a factory to provide access on all floors.