

# MT-X 1030ST

TECHNICAL DATA SHEET



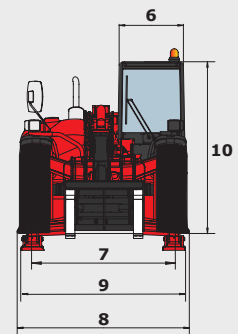
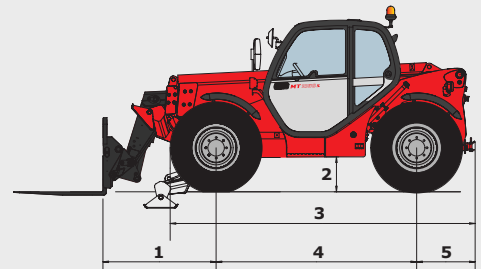
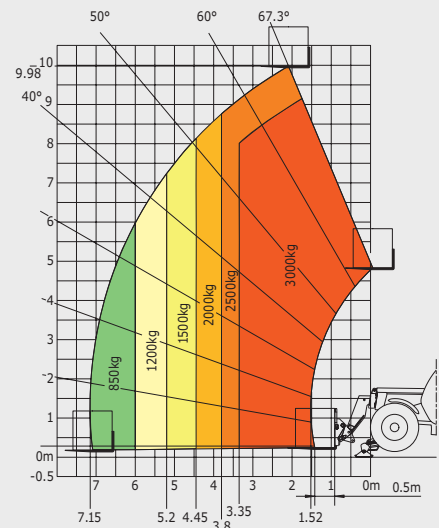
 **MANITOU**

[www.manitou.com](http://www.manitou.com)

# MT-X 1030ST

MT-X 1030 ST	
<b>Lifting</b>	
Max. capacity	3000 kg
Max. lifting height	9.64 m
Reach at max. height	2 m
Break-out force with bucket	5330 daN
<b>Unladen time</b>	
Lifting	6.7 secs
Lowering	5.4 secs
Extension	13.6 secs
Retraction	8.7 secs
Crowd	2.7 secs
Dump	2.3 secs
<b>Tyres</b>	400/80-24
<b>Braking</b>	multiple-disk brake with oil bath on front and rear axles
<b>Engine</b>	PERKINS
Type	1104D-44 TA
Cubic capacity	4400 cm <sup>3</sup>
Power	101 HP/74.5 kW
Max. torque	410 Nm - 1400 rpm
Injection	direct
Cooling	water
Laden drawbar pull	9100 daN
<b>Transmission</b>	torque converter
Reversing shift	electrohydraulic control
Number of gears (forward/reverse)	4/4
Max. travel speed (may vary according to applicable regulations)	27 kph
<b>Hydraulics</b>	
Pump	gear type with flow splitter 106 l/min - 250 bar
<b>Capacities</b>	
Hydraulic oil	128 l
Fuel	120 l
<b>Unladen weight (with forks)</b>	7525 kg
<b>Dimensions</b>	
1. Front wheel centre to carriage	1.51 m
2. Ground clearance	0.44 m
3. Overall length to front tyres	4.05 m
4. Wheelbase	2.69 m
5. Rear wheel centre to rear face	0.79 m
6. Overall width of cab	0.86 m
7. Inside tyre width	1.85 m
8. Overall width	2.26 m
9. Overall width (stabilizers lowered)	2.21 m
10. Overall height	2.30 m
Turning radius (over tyres)	3.75 m
Carriage rotation (crowd/dump)	11.9°/113.7°
<b>Noise and vibration</b>	
Noise at driving position (LpA)	76 dB
Environmental noise (LwA)	104 dB
Vibration to whole hand/arm	<2.5 m/s <sup>2</sup>
Vibration on driver's body	1.015 m/s <sup>2</sup>

**Rough terrain load chart**  
standard EN1459 B



This brochure describes versions and configuration options for Manitou products which may be fitted with different equipment. The equipment described in this brochure may be standard, optional or not available depending on version. Manitou reserves the right to change the specifications shown and described at any time and without prior warning. The manufacturer is not liable for the specifications given. For more information, contact your Manitou dealer. Non-contractual document. Product descriptions may differ from actual products. List of specifications is not comprehensive. The logos and visual identity of the company are the property of Manitou and may not be used without authorisation. All rights reserved. The photos and diagrams contained in this brochure are provided for information only.

MANITOU BP SA - Limited company with board of directors - Share capital: 39,547,824 euros - 857 802 508 RCS Nantes

