

M600JP Hybrid Telescopic Boom Lift

JLG®

APPLICATIONS

- Facilities maintenance
- Shopping centres and other indoor/outdoor areas
- Manufacturing and warehouse applications and stock-takes
- Electricians
- Plumbers
- Window installers
- All maintenance and construction work
- Factory fit outs before electrical power is connected

M600JP Hybrid Telescopic Boom Lift

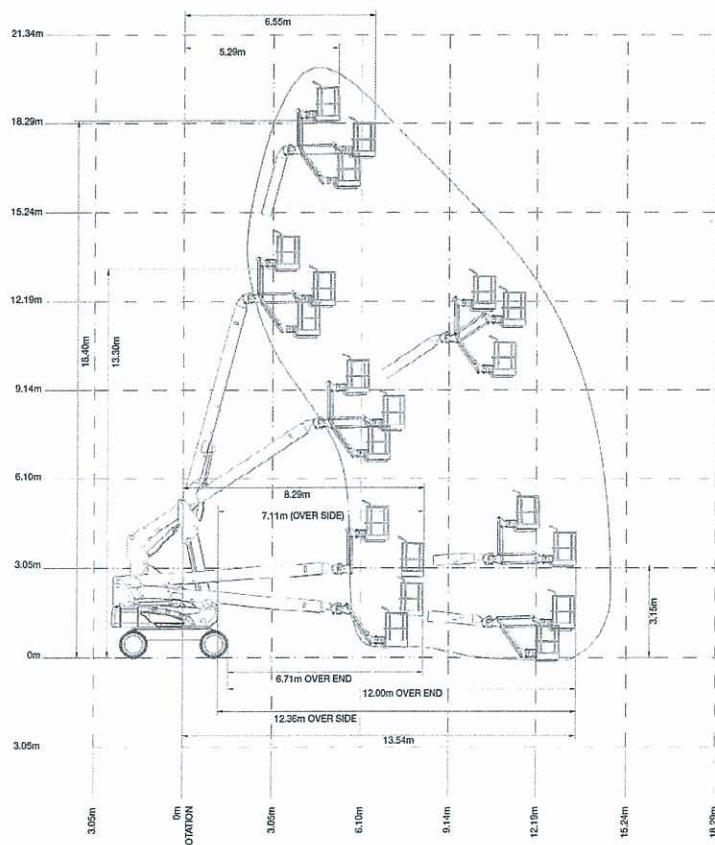


QUESTIONS TO ASK

- What are the ground conditions in the work area?
- What is the working height needed for the job?
- Do you need an extension lead outlet in the platform?
- Do you need non-marking tyres?
- Do you have 240V AC power on site?

KEY SELLING POINTS

- Smooth control, proportional electric drive, with two speed ranges
- Proportional lift and swing controls at the platform
- Four wheel drive assist with front (steer) hydraulic drive motors with constant traction speed sensor
- Oscillating front steer axle to assist front wheel traction
- Jib boom and basket rotate
- Jib PLUS feature allows jib boom to rotate either side of centre
- Cylinder boots protect cylinder rods from overspray and contaminants
- Non-marking urethane filled tyres
- Multi axis 4 degree level sensor
- Plug in JLG analyser at platform and base to indicate system functions for servicing and adjustment
- On "M" version, a Kubota single cylinder diesel engine to operate 55A Mechtron charger when battery voltage drops below a prescribed level. Charge on the go



SPECIFICATIONS

Performance:

Platform Height (max.)	18.29m
Working Height	20.29m
Platform Rotation Angle	180°
Jib Plus Rotation Angle	180°
Jib Raise Angle	89°
Jib Lower Angle	56°
Jib Articulation Range	145°
Maximum Horizontal Outreach	13.23m
Platform Capacity	230kg
Slewing Angle	400°
Continuous Slew	No

Dimensions:

Stowed Length	10.15m
Stowed Height	2.57m
Overall Width	2.44m
Wheelbase	2.74m
Ground Clearance	0.30m
Platform Width	1.83m
Platform Length	0.76m
Overall Jib Length	1.24m
Tailswing	1.22m
Axle Oscillation Standard	Std

Power:

Power Source	Electric DC
Engine Make	Kubota
Engine Model	OC 60
Engine Power	5kW
DC Voltage	48V
DC Power	415 amp h
Genset	Mechtron 55A
Auxiliary Power	Hand Pump

Travel:

Tyre Size	36/14 LL - 22.5
Tyre Type	Foam Filled/Non-Marking
Inside Turn Radius	1.22m
Outside Turn Radius	4.64m
Drive Speed Elevated	0.8 km/h
Gradeability with AWD	45%
Drive Speed - AWD	5.0 km/h
Maximum Ground Bearing Pressure	3.7kg/cm²

Weights and Capabilities:

Fuel Tank Capacity	49.21 Ltr
Hydraulic Tank Capacity	56.78 Ltr
Operating Weight	7,702kg